

Vetpath is a specialist veterinary laboratory dedicated to providing our clients with the finest laboratory diagnostic service. A team of veterinary pathologists and medical scientists with extensive experience in veterinary diagnostic pathology forms the core of the Vetpath team.

VN News

JUNE 2011

NEW OPTIONS FOR THYROID TESTING

Assessment of thyroid function is an important part of small animal practice. Vetpath is introducing some new options in thyroid testing to help simplify evaluation of patients suspected to have thyroid disease.

Free T4 will now be run in house at Vetpath. Free T4 represents less than 0.1% of total T4, yet is the biologically active fraction of T4. The free T4 concentration is much less likely to be affected by non-thyroidal illness, and therefore will provide a more accurate assessment of thyroid status. The free T4 method that will be used at Vetpath correlated with the gold standard method of free T4 by equilibrium dialysis.

Two thyroid panels will also be introduced. The panels are designed to specifically evaluate parameters that are commonly abnormal in thyroid illness in these species. The panels will include free T4 concentration in addition to total T4 concentration.

The panels will include:

Canine Thyroid Panel:

- Free T4, Total T4, TSH, cholesterol and PCV.

Feline Thyroid Panel:

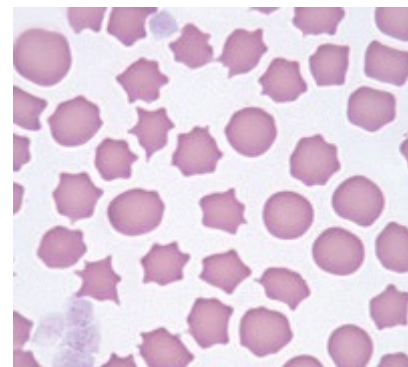
- Free T4, Total T4, ALT, ALP, GGT, urea and creatinine.

Vetpath is also increasing the availability of endocrinology testing. These tests are now offered Monday to Saturday. The cut-off is 2:00pm Monday to Friday and 1:00pm on Saturday. Endocrinology testing is not routinely available on Sundays or public holidays unless pre-arranged.

Don't forget.....

The Senior Pet Promotion is on again for 2011. This program provides practices with a significant reduction in cost for health screening elderly pets. You need to book a month before the program ends in October. Don't miss out!

What are these abnormal erythrocytes called?



Source:

<http://ahdc.vet.cornell.edu/clinpath/modules/rbcmorph/rbcmorph.htm>

The answer is over the page.....

How clean are your antiseptics?

Last year Vetpath introduced the Workplace Hygiene Monitoring Program to help assess the cleanliness on various areas in your practice.

While this program focuses on contact plates for various surfaces and spore strips to evaluate your autoclave, one practice chose to test their chlorhexidine solution with some interesting results.

Two bacterial species were isolated from the solution; a sensitive *Pseudomonas sp* and a multi-resistant *Proteus sp*. The presence of a multi-drug resistant organism in an antiseptic solution is highly concerning and has the potential to cause a nosocomial infection in a patient.

We would like to encourage you to consider submitting samples of fluids you use in your practice for culture. Examples could include antiseptic solutions or tattoo ink. A portion of the fluid can be submitted in a serum tube or sterile urine pot. Alternatively, you could submit a piece of sterile gauze soaked in the solution.

If you have any questions regarding culture of hospital fluids, please contact the laboratory on (08) 9259 3600.

Update on the quiz night....

Vetpath's first quiz night was a resounding success. Both the general knowledge and pathology rounds brought out the competitive spirit in our participants, with lots of fun being had by all. The team from Midland/Bullsbrook Veterinary Hospital were the winners on this inaugural occasion and we look forward to hosting the next quiz night so that they can defend their crown. Vetpath would like to thank all those who attended and made this night a success.



The cells are....

Echinocytes.

Echinocytes are speculated (crenated) RBCs. The term crenation is also used to refer to cells of this type. The projections

of the cell membrane may be sharp or blunt, are usually numerous, and tend to be evenly spaced around the circumference. The spicules are usually of uniform size which differentiates echinocytes from acanthocytes which have irregularly sized spicules, irregularly spaced around the cell membrane.

Causes of echinocyte formation include:

- Artifact – aging of the sample or excess EDTA.
- Drugs - salicylates, phenylbutazone, furosemide, chemotherapeutic agents (e.g. doxorubicin).
- Horses - electrolyte depletion.
- Dogs – renal disease (especially glomerulonephritis), pyruvate kinase deficiency, neoplasia.



Vetpath Laboratory Services

RECEPTION DIRECT +61 8 9259 3600

LOCAL COURIER PICK-UPS +61 8 9259 3666

AFTER HOURS MOBILE 0418 916 436

FACSIMILE +61 8 9259 3627

EMAIL enquiries@vetpath.com.au

WEBSITE www.vetpath.com.au

VETERINARY PATHOLOGISTS

Sue Beetson BSc (Hons) BVMS PhD

Jenny Hill BVSc (Hons) Dip ACVP

John Jardine BVSc MMedVet (Path) Dip ACVP MRCVS

Mary McConnell BVSc Grad.Dip.Clin.Path PhD

Leanne Twomey BSc BVMS (Hons) PhD Dip ACVP